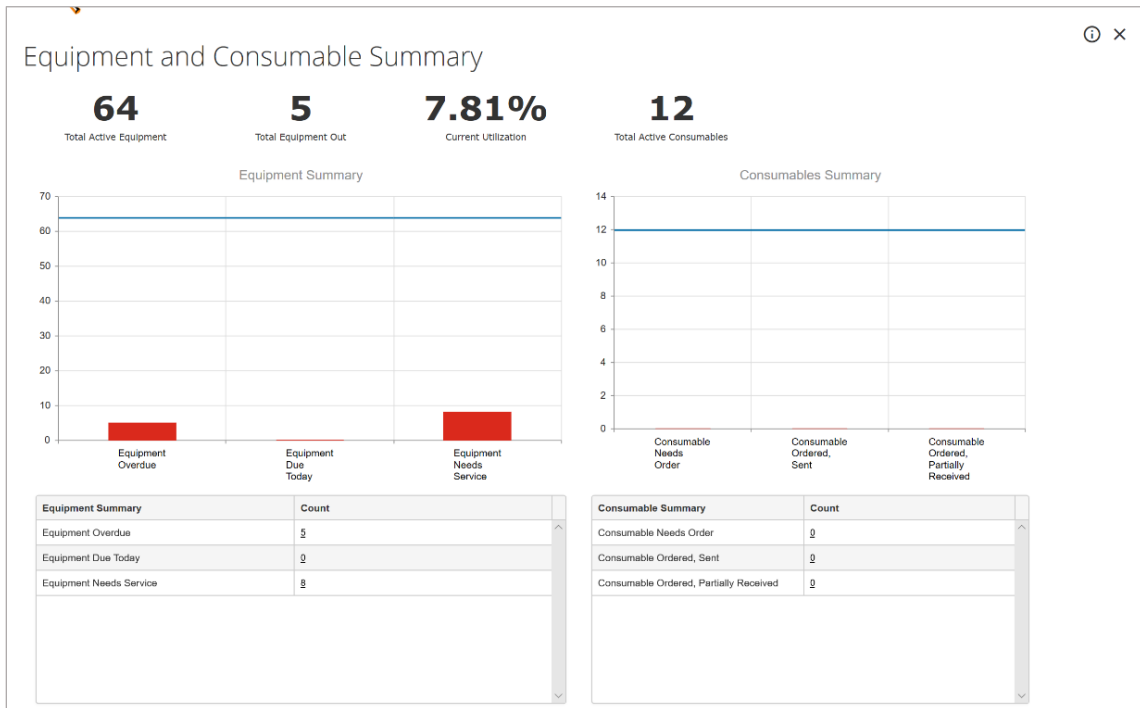


Equipment and Consumable Summary Dashboard

This document will provide you with a more detailed understanding of the dashboards and the required information for an accurate population of information on the dashboards. Each dashboard panel has an information icon, this is provided on each panel with a description of what is included on the displayed panel. Additional icons will be provided to the user on select dashboards, hover over the icon to display the definition the icon function. Click on the icons to perform the action or function. ***Employee Permissions will apply with the function/action of icons such as Print and Export. The Administrator manages these permissions within the Employee information in your database. Employee Permissions are located at Settings→ System Setup→ Employee, Permissions.*

Equipment and Consumable Summary Dashboard

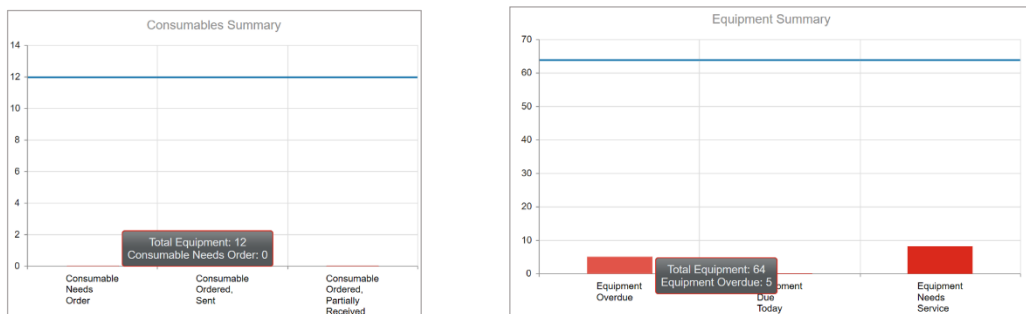
This shows a summary of equipment (active, out, overdue, due today, and equipment that requires service) and a summary of consumables (need to order, order sent, order partially received)



Clicking on the Equipment or Consumables will direct you to the Equipment Browser.



Hovering over the columns in the Equipment Summary or Consumables Summary will provide the user with a popup of the number of items associated with that status.



Equipment and Consumable Summary Dashboard

Clicking on the underlined number in the Equipment Summary or Consumables Summary Count will direct the user to the Equipment Browser.

Equipment Summary	Count
Equipment Overdue	<u>2</u>
Equipment Due Today	<u>0</u>
Equipment Needs Service	<u>2</u>

Consumable Summary	Count
Consumable Needs Order	<u>0</u>
Consumable Ordered, Sent	<u>0</u>
Consumable Ordered, Partially Received	<u>0</u>